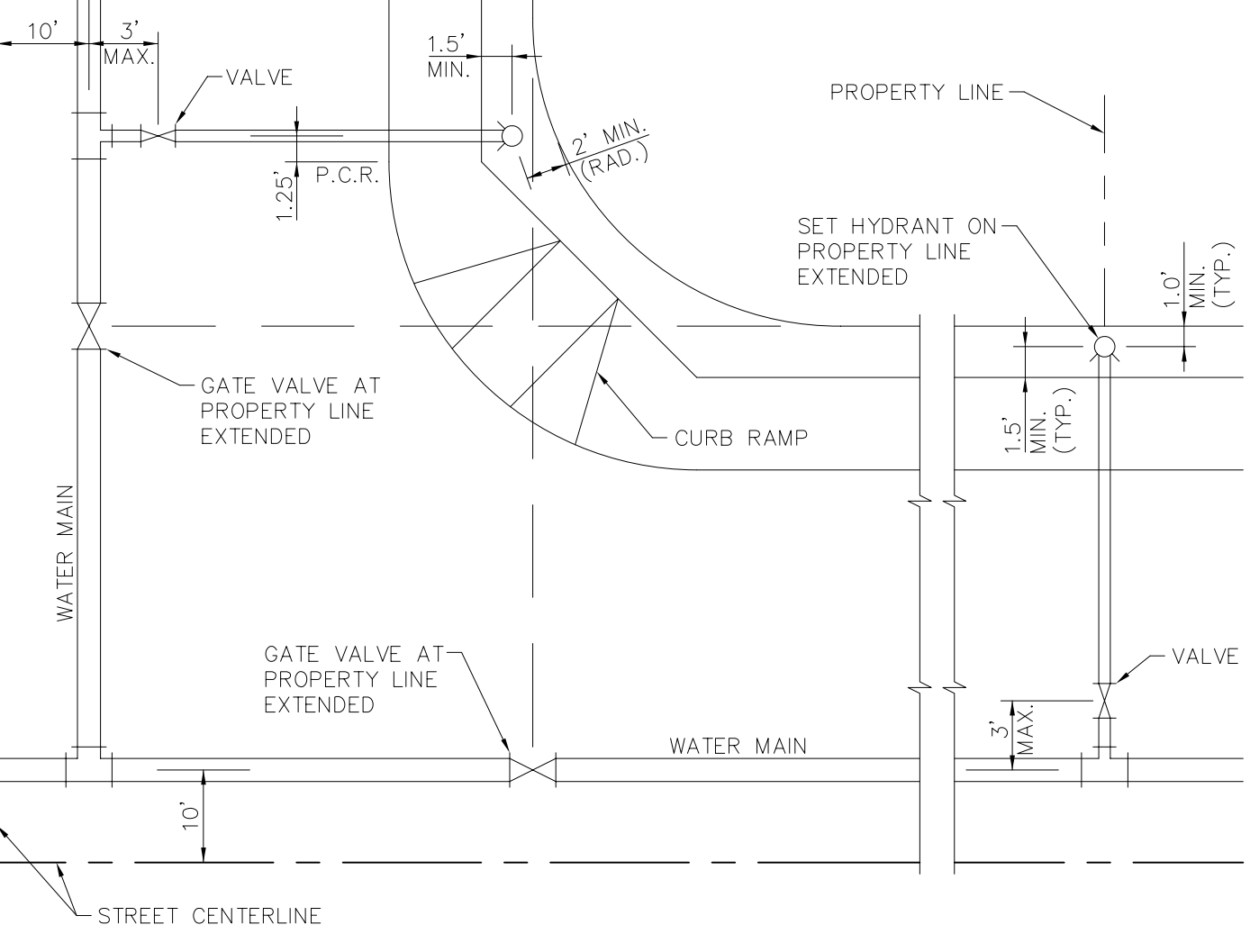


FLOWLINE

BACK OF WALK
(WHERE APPLICABLE)

R.O.W./PROPERTY LINE



PROPERTY LINE

SET HYDRANT ON
PROPERTY LINE
EXTENDED

GATE VALVE AT
PROPERTY LINE
EXTENDED

CURB RAMP

GATE VALVE AT
PROPERTY LINE
EXTENDED

WATER MAIN

VALVE

STREET CENTERLINE

DATE
7/2006

DRAWING
D.6W

H:\DRAWINGS\PDDETAILS\D.6W.DWG, 12/21/2006 1:44:42 PM

PLATTE CANYON
WATER & SANITATION DISTRICT

INTERSECTION VALVE
AND FIRE HYDRANT
LOCATION